



KX-TDA TAPI

TAPI Tools Manual

Revision: 1.0

Date: 21 Oct, 2003

1	TAPI Tools	3
1.1	CallMonitor3	3
1.1.1	Main window.....	3
1.1.2	Menu.....	4
1.1.3	Detailed Line Data.....	4
1.1.4	Detailed Call Data	6

1 TAPI Tools

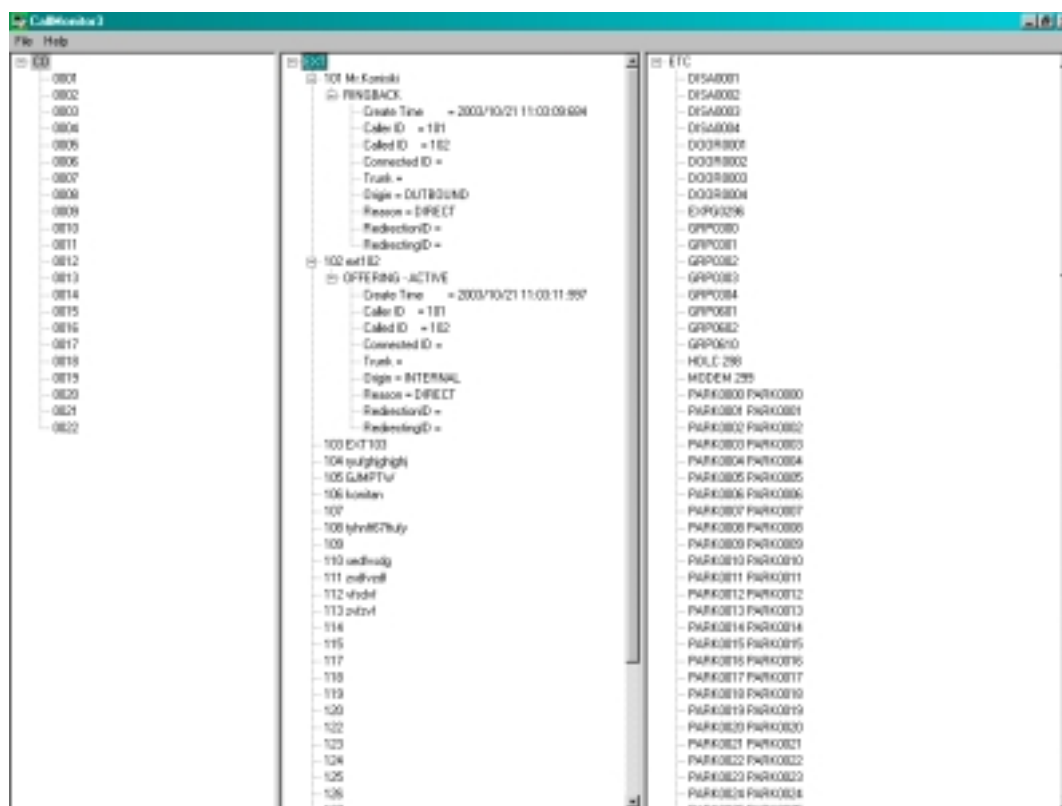
CallMonitor3 checks to see if TAPI properly works at application level. If this application can run correctly after TSP installing, it means TAPI works correctly.

1.1 CallMonitor3

CallMonitor3 is the test tool to check specification of Panasonic KX-TDA TAPI and behavior of Panasonic KX-TDA TSP.

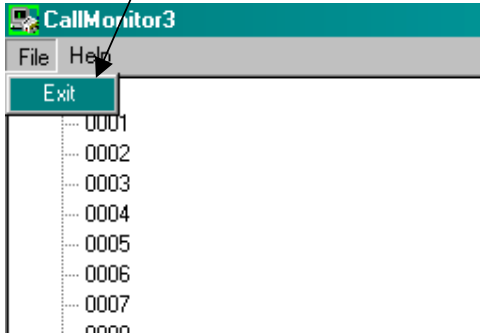
The left window is the information of CO line, the middle window is the information of EXT line and the right window is the information of other line. Each window displays the detailed call information such as callerID or call destination and the basic line information such as extension numbers, extension or call status.

1.1.1 Main window



1.1.2 Menu

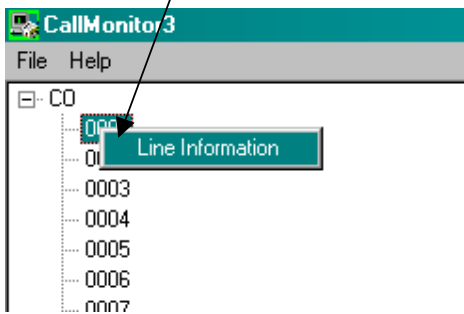
The application exits.

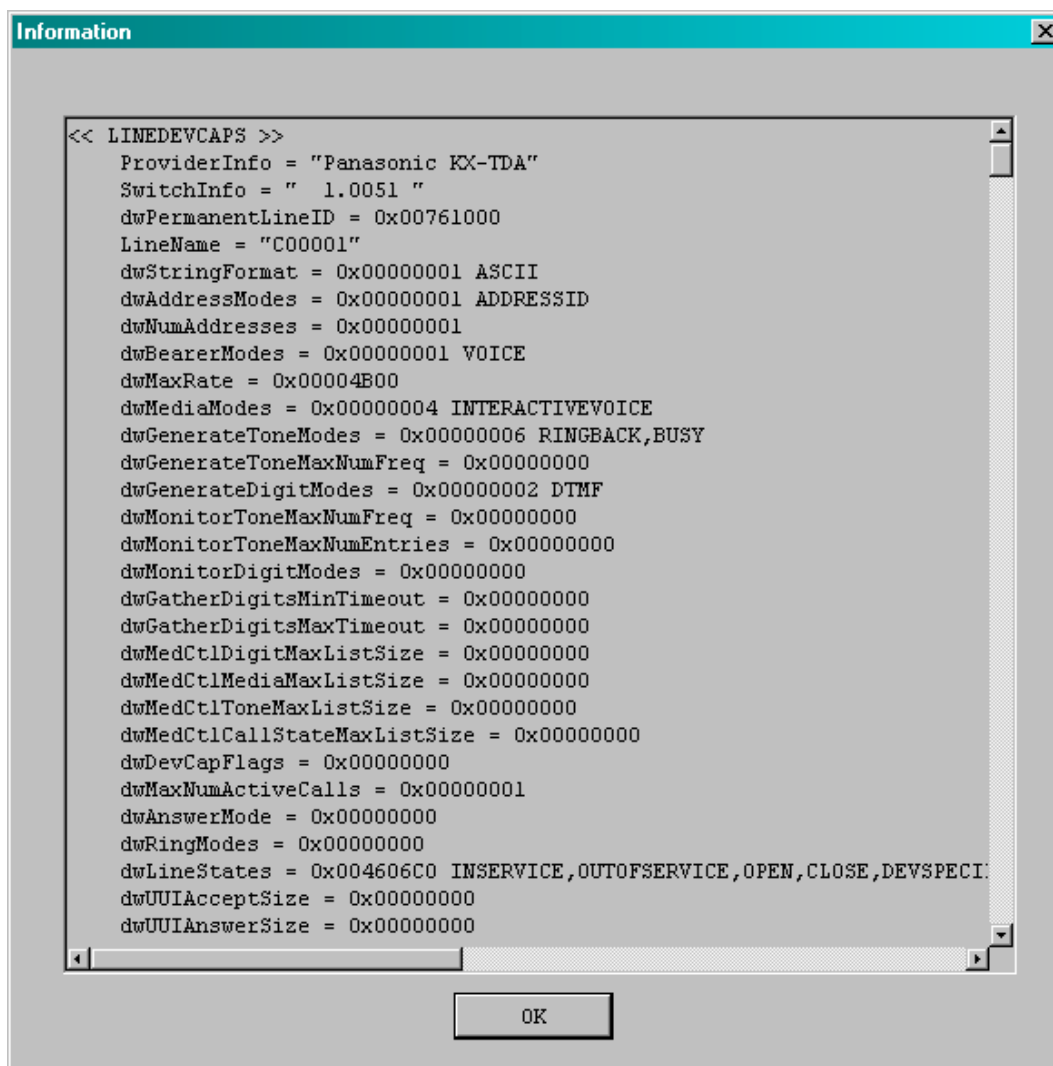


1.1.3 Detailed Line Data

(LINEDEVCAPS, LINEDEVSTATUS,
LINEADDRESSCAPS, LINEADDRESSSTATUS)

Right-click on the line which you want to display and select “Line Information.”





1.1.4 Detailed Call Data

(LINECALLINFO,LINECALLSTATUS)

Right-click on the call which you want to display and select "Call Information."

